



- COLLECTION -

FW 14.15



18 CRR 81  
CERRUTI

#### URBAN SPORT

This is an urban mood contaminated by sport. Skiing is alluded to throughout the collection. Sophisticated fabrics like seersucker, mimetic nylon with ton sur ton iridescent effects evolve with the arrival of ultra-lightweight goose feather padding and downproof technical materials. Colour-contrast geometries also appear in the knitwear, a modern new graphic impact produced by flock techniques and paint-effect prints.

#### PLEIN HIVER

Padded, protective and comfortable garments explore new horizons. The colours evoke nature in winter, with warm browns, sand, hazel, reds and soft greys. The fabrics provide heightened winter performance thanks to a mix of innovative materials and ergonomic cuts. Functional details with a high aesthetic content, such as the knitted hems and fur trims point up the outerwear silhouette. The quilted jackets have a new aspect thanks to their water-resistant nylon with a micro-chevron print or large graphic checks.

#### CITY URBAN

Cleans lines, rigorous volumes, cosmopolitan style: the 18CRR81 Cerruti imprint is evident in its impeccable tailoring and a sporting influence geared to the needs of day to day life. The colour palette explores new tones like stone, tobacco, air force blue, pewter, teal and smoke grey, in new shades, pale or deep, solid or mélange. Textile experimentation has given the materials a soft look and a pleasing hand.

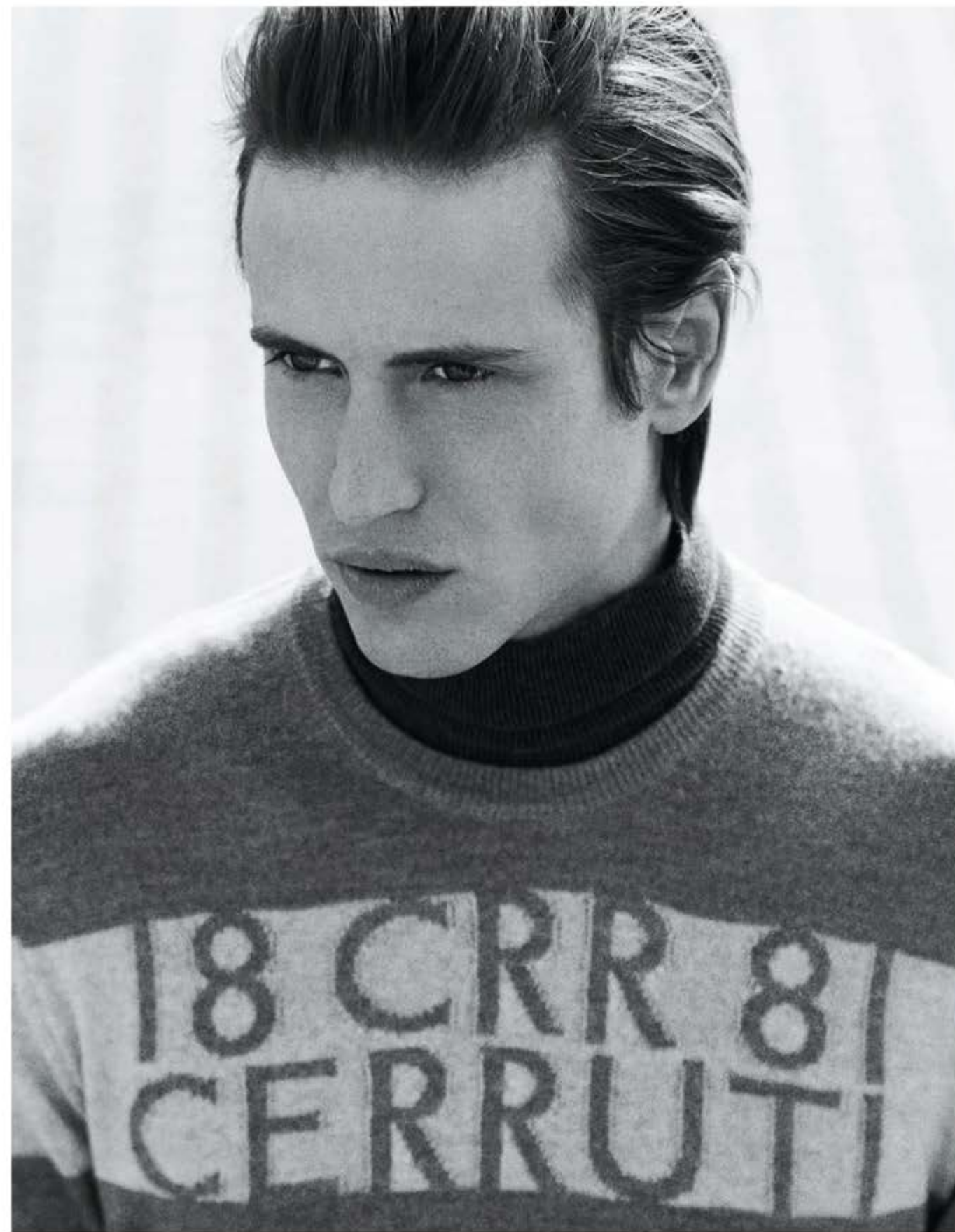
The outerwear shows lavish attention to detail. The trousers have crisp, slim volumes and use brushed cotton with salt & pepper tweed effects, pinstripes, micro-houndstooth and ton sur ton Prince of Wales. 5-pocket denims are with rinses and slight worn effects. The line is completed by the micro-pattern shirts.







MEN'S COLLECTION  
FW 14.15















MEN'S COLLECTION  
FW 14.15









## URBAN SPORT

It is an international flavour with sporty references and sudden allusions to Aspen or Mégeve. Dynamic colour shifts, from blue to indigo mixed with black, from grey to off-white with dashes of petroleum green, work their way through contrasting geometrical combinations, abstract prints, colorblocking and special jacquard effects. Luxury sweatshirts made of a matelassé fabric, the box cut tunics to wear with slim-fit flannel trousers and long-hair alpaca overcoats with gunmetal colour coated tricot sleeves. Always warm and lightweight, the outerwear comes in various volumes, from the versatile nylon quilts to the padded urban trench with a colour-contrast lining, from the techno-chic parka made of memory taffeta to the houndstooth and lurex flannel caban jacket.

## DENIM

Denim cloth has been revisited, with lighter fabrics and stretch materials. The prevalent colour is black (black/black) with rinses and slight worn effects, alongside a new entry, laser-worked, with a bold crocodile scale pattern. The classic indigo blue jeans have been enriched. The 5-pocket models, coming in satin, corduroy, jacquard and vichy, cover a broad range of day to day needs.

## CITY URBAN

An attitude tending to understated elegance and minimalism, shunning excesses but sacrificing nothing. Such is the basis of a flexible wardrobe adapting to all occasions in day-to-day life and blending fashion content in a perfect alchemy with the latest luxury detailing. Rigorous modern forms are softened by a palette of natural hues from sand to nude, with precious touches of gold, burgundy, caramel and chocolate. In the outerwear, technical materials are used with sartorial fabrics to create new consistencies and slimmer fits: the quilted parkas, the silky-hand satin overcoat, the pleated and quilted nylon taffeta jacket with an extremely in-trend egg shape. A new jacquard nylon with a crocodile scale print creates iridescent effects in the long quilted jacket and the padded blouson, while the colour contrasts between inside and out give a modern twist to the sports parkas and double-breasted blazers. Dresses and skirts are transformed into objects of desire with A-shape lines, draped or cross-over, graced by double-sided cady. Revisited jersey, silk and cashmere knits are updated with micro-studs and logo graphics.







WOMEN'S COLLECTION  
FW 14.15



















WOMEN'S COLLECTION  
FW 14.15





Produced and distributed by  
Industries Sportswear Company SRL - Via B. Maderna 11 -  
30174 Mestre(VE) - Italy

Ph. +39 041 5044501  
18crr81cerruti@isccompany.com



